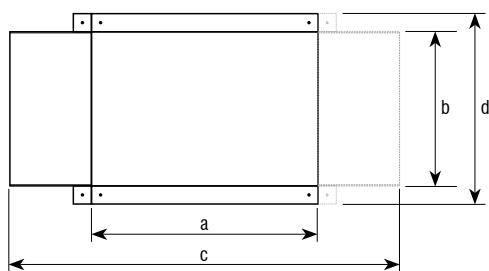
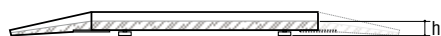
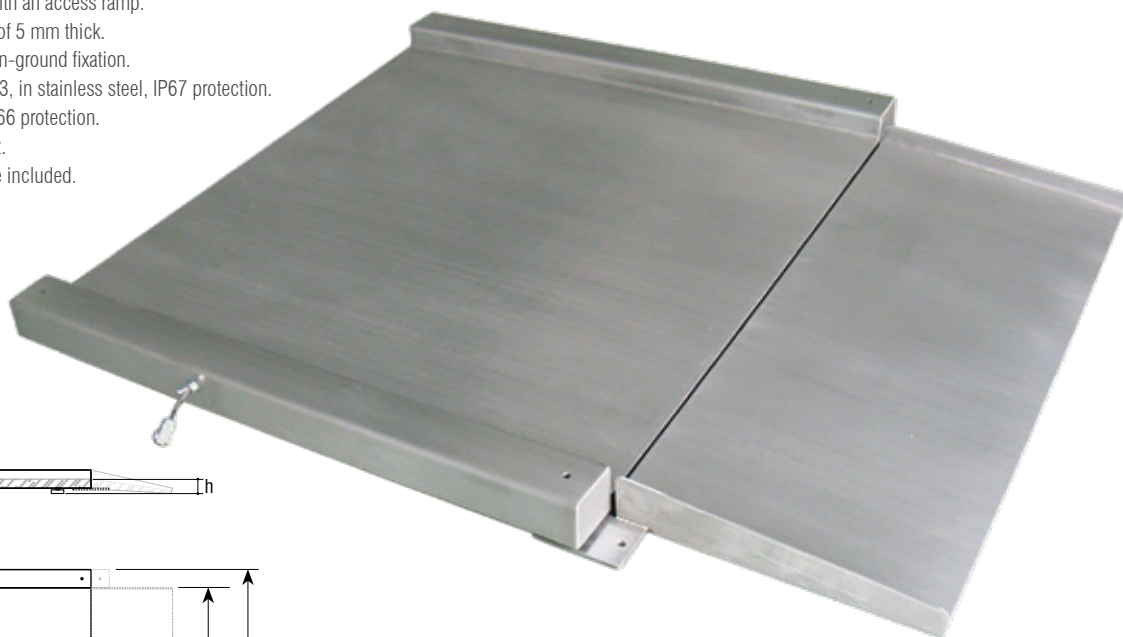


## 4 load cells scale platform



### FEATURES:

- » Platform with 4 load cells, with low profile in stainless steel.
- » It can be used in legal metrology.
- » Installation on ground with an access ramp.
- » Structure in steel sheet of 5 mm thick.
- » With anchor plates for on-ground fixation.
- » Load cells OIML R-60 C3, in stainless steel, IP67 protection.
- » Junction box in ABS, IP66 protection.
- » Adjustable feet in height.
- » 4 output metres of cable included.



Stainless steel access ramp



Stainless steel column  
(on ground)

Dimensions (mm)	a	b	c	d	h
1200x1200	1200	1210	2220	1400	50
1500x1200	1500	1210	2520	1400	50
1500x1500	1500	1510	2520	1700	50

Code #	Capacity (kg)	Readout (g)	Dimensions (mm)	Packing dimensions (mm)	Packing weight (kg)	Packing dim. ramp (mm)	Ramp pack. weight (kg)
<b>261525</b>	600	200	800x800	860x1060x100	78	640x1040x70	25
<b>261526</b>	600	200	1000x1000	1060x1260x100	95	1240x640x70	29
<b>261527</b>	1500	500	1000x1000	1060x1260x100	95	1240x640x70	29
<b>260246</b>	1500	500	1200x1200	1420x1220x120	118	630x1420x70	31
<b>260247</b>	3000	1000	1200x1200	1420x1220x120	118	630x1420x70	31
<b>260248</b>	1500	500	1500x1200	1720x1220x120	160	630x1420x70	31
<b>260249</b>	3000	1000	1500x1200	1720x1220x120	160	630x1420x70	31
<b>260250</b>	1500	500	1500x1500	1720x1520x120	210	630x1720x70	75
<b>260251</b>	3000	1000	1500x1500	1720x1520x120	210	630x1720x70	75

### Accessories

Code #	Accessories description
<b>910203</b>	Stainless steel ramp for platform BVRS 800x800 mm
<b>910204</b>	Stainless steel ramp for platform BVRS 1000x1000 mm
<b>910089</b>	Second stainless steel access ramp for BVRS 1200 x 1200 mm and 1500 x 1200 mm; ramp size: 1200/1210 x 500 mm
<b>910090</b>	Second stainless steel access ramp for BVRS 1500 x 1500 mm; ramp size: 1500/1510 x 500 mm
<b>910133</b>	Stainless steel column (on ground)
<b>910197</b>	Stainless steel column (on ground)